

Accelerated BSN at Roseman

Admissions Guide

ROSEMAN UNIVERSITY
COLLEGE OF NURSING



ABSN

DNPFNP

DNPNA



ROSEMAN UNIVERSITY
COLLEGE OF NURSING

An Educational Model for Today's Nursing Demands

ACCELERATED BACHELOR OF SCIENCE IN NURSING (ABSN)

- Roseman's Six-Point Mastery Learning Model® leverages unique teaching methods to facilitate deep and lasting active learning, reduce competition, increase collaboration and teamwork, and expose students to the healthcare setting early, allowing for greater competency, mastery, and confidence.
- The Accelerated Bachelor of Science in Nursing (ABSN) offers small class sizes, early hands-on experience, and a focused block curriculum that allows students to be successful in the classroom and into their nursing careers.
- Fall, Spring and Summer start dates, our accelerated program allows students to opt into hybrid-online or on-campus, based on their own learning style and preferences, at our Nevada or Utah campuses.
- Our students enjoy high on-time graduation rates and exceptional NCLEX passing rates (91.22%*), as well as a strong return on their investment with a 92.30%** job placement rate within six months of graduation.



“The Six-Point Mastery Learning Model®, state-of-the-art classroom/lab facilities, and prestigious clinical placements further elevate the academic experience. As a Hero Scholar, I have felt even more nurtured by the University in my journey to becoming a nurse. I am profoundly grateful to everyone at Roseman and am proud to be studying here—best decision of my life!” – **Richard, ABSN Class of 2024**

*Data for first time pass-rate on the Next Gen NCLEX board exam is from tests taken by Roseman ABSN graduates for 2024, NCSBN.

**Data is an average of both campuses for 2024 based on the Roseman University College of Nursing Graduate Employment Survey.

FAST FACTS

- Program duration: Less than eighteen (18) months
- Application, fees, transcripts, and interview required
- Fall, Spring and Summer starts
- Minimum 2.75 GPA & 49 semester credits required
- Choose your journey: hybrid-online or on-campus
- Minimum 58.7% TEAS Score



**ABS**N**DNP**FP**DNP**NA

PREREQUISITES

All prerequisite coursework must be completed with a “C” or better grade. Courses may not be used to satisfy more than one prerequisite. Credits are indicated as semester credits. Students who have completed coursework in the quarter calendar system will need to divide the number of quarter credits by 1.5 to determine the semester credit equivalent.

- **Physical/Biological Science** (16 credits)
- **Social Science** (6 credits)
- **Statistics** (3 credits)
- **English** (6 credits)
- **Humanities** (6 credits)
- **Electives** (9 credits)
- **US and/or Nevada Constitution** (3 credits)

Total Number of Prerequisite Credits = 49

All submitted prerequisite coursework is subject to a full review to ensure content relevancy.

A StraighterLineSM TO ROSEMAN UNIVERSITY

Roseman University College of Nursing is making it easier to overcome financial and scheduling constraints to finish required coursework. Prerequisite coursework can be completed through StraighterLineSM, offering online, self-paced, low-cost, ACE-approved general education courses. Roseman’s collaboration with StraighterLineSM offers an affordable, convenient pathway to a degree in nursing.

HIGH SCHOOL DIRECT ENTRY ACCELERATED ABSN

High School students who have earned dual credit may consider direct entry into the ABSN program, saving time and money without completing a 4-year undergraduate program.

ON-CAMPUS VS HYBRID-ONLINE

Both our on-campus and hybrid-online learning modality options have the same level of difficulty and the same requirements to complete the program. The didactic portion of the hybrid-online option is provided online. All clinical and lab requirements for the hybrid-online option require you to be on a Roseman University campus or clinical site.

FOR MORE INFORMATION

Call 702-968-6642, email apply@roseman.edu or visit roseman.edu to view the most up-to-date list of admissions requirements and tuition & fees.

SECURE YOUR FUTURE. SERVE YOUR COMMUNITY. BECOME A NURSE.



BETTER PATIENT OUTCOMES

Serve your community in a variety of different practice settings.



HIGH DEMAND

For BSN-trained nurses, greater job security, better salary opportunities.



RANKED #1

Nurses are the most trusted profession according to Gallup.

ROSEMAN UNIVERSITY
COLLEGE OF NURSING

Transforming Education. Reimagining Healthcare. Embracing Discovery. Committed to Community.
roseman.edu | [@rosemanuhs](https://twitter.com/rosemanuhs) | [@rosemannursing](https://twitter.com/rosemannursing)





ROSEMAN UNIVERSITY
COLLEGE OF NURSING

straighterline

StraighterLine to Roseman University

AFFORDABLE, CONVENIENT PATHWAY TO A DEGREE IN NURSING

Roseman University College of Nursing is making it easier for you to overcome financial and scheduling constraints to finish your courses and meet your academic goals. If you're in need of prerequisite courses to attend Roseman, it's time to maximize Roseman's partnership with StraighterLine. StraighterLine offers online, self-paced, low-cost, ACE-approved general education courses. Roseman's partnership with StraighterLine offers an affordable, convenient pathway to a degree in nursing.

StraighterLine is Ideal if You

- Face affordability issues
- Face class space and/or scheduling limitations
- Are missing general education requirements
- Are incoming or are soon-to-be graduating and need to fill general education gaps
- Want to accelerate degree program by starting coursework immediately

Benefits to You

- Low-risk free trial available
- Credit transfer guarantee
- Enrollment Advisors
- Student Support Specialists
- Online on-demand tutoring center available 24/7
- Subject matter experts available





FREQUENTLY ASKED QUESTIONS

How does StraighterLine help you prepare for admission and eventually graduate?

Our flexible, self-paced, online general education courses don't just prepare students to get into—or back into—school. They provide wraparound tools such as on demand tutoring and advisor support to ensure successful course completion. Self-paced and online does NOT mean students are out there on their own.

How do I receive credit for StraighterLine coursework?

Upon successful course completion, you are immediately prompted to send a transcript to the proper office at your school. There's no cost for transcript delivery.

What is ACE credit?

The American Council on Education's College Credit Recommendation Service (ACE CREDIT) helps students gain academic credit for formal courses and examinations taken outside of traditional degree programs. With over 35,000 courses reviewed, ACE is the national leader in the evaluation process for education and training obtained outside the traditional classroom. Thousands of colleges recognize ACE CREDIT recommendations, and ACE CREDIT has recommended all of StraighterLine's courses. Your school has already determined which StraighterLine courses will transfer, and how those credits meet degree requirements.

Can I apply my financial aid or GI bill benefits?

No, StraighterLine doesn't offer financial aid. However, StraighterLine is often used when you reach your financial caps or when you need to fill a general education gap quickly and affordably.

Can I contact StraighterLine advisors with my questions?

Yes, please do! StraighterLine advisors are happy to speak with you. Please contact the Student Advisors at (877) 787-8375.

Live Chat and Support Requests are also available at straighterline.com.

StraighterLine Advisor Support hours are:

Monday – Friday: 8am – 8pm ET

Saturday – Sunday: 9:30am – 5pm ET



ROSEMAN UNIVERSITY
COLLEGE OF NURSING

Transforming Education. Reimagining Healthcare.
Embracing Discovery. Committed to Community.

roseman.edu | [@rosemanuhs](https://twitter.com/rosemanuhs)

IGNITE YOUR CAREER

Follow your Heart



APPLICATION OPEN & CLOSE DATES

Summer 2026 <i>Hybrid-Online</i> Opens November 1, 2025 Closes May 1, 2026	Fall 2026 <i>On-Campus</i> Opens August 7, 2025 Closes June 1, 2026	Fall 2026 <i>Hybrid-Online</i> Opens April 1, 2026 Closes August 1, 2026	Spring 2027 <i>Hybrid-Online</i> Opens August 1, 2026 Closes November 1, 2026
--	---	--	---

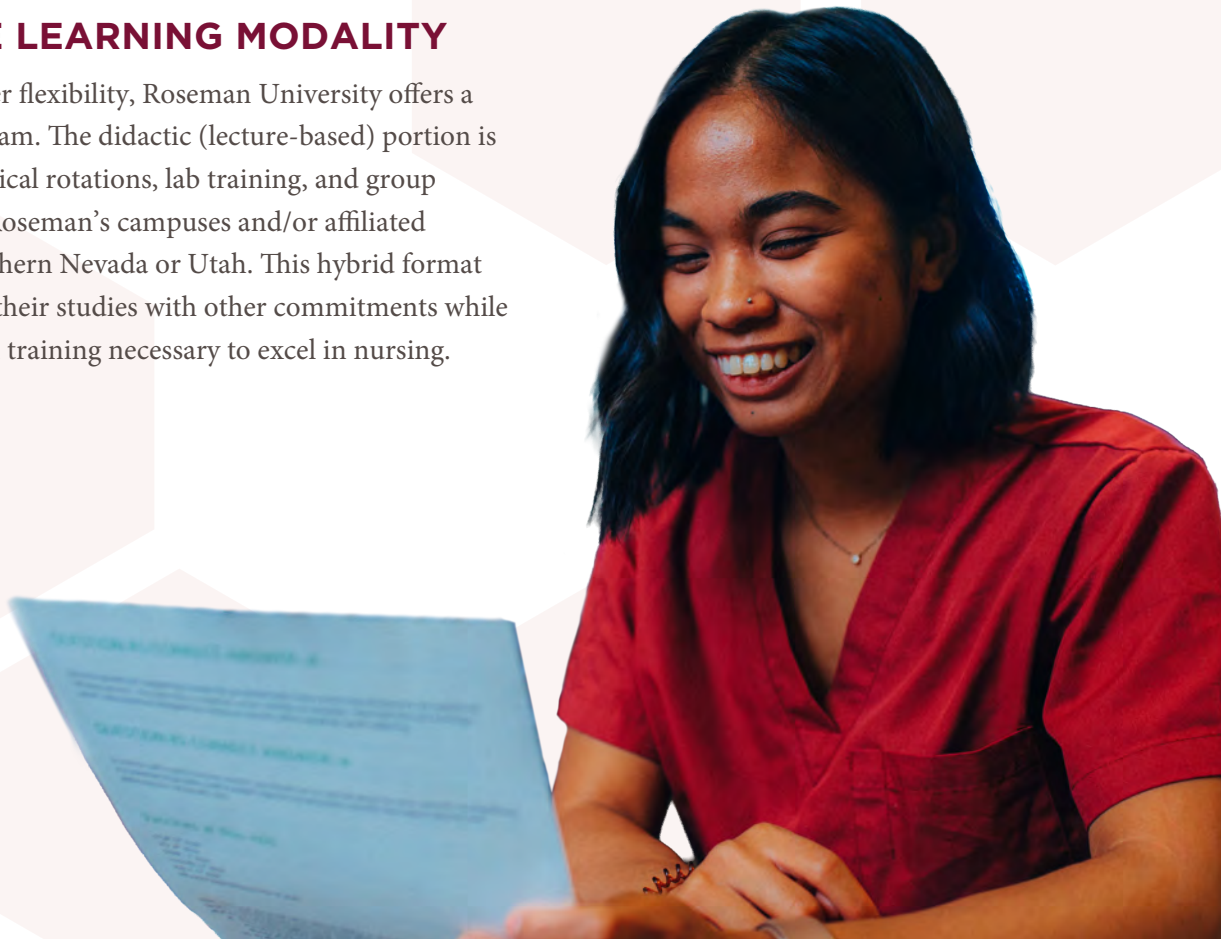
ONE PROGRAM – TWO LEARNING MODALITY OPTIONS

ON-CAMPUS LEARNING MODALITY

The on-campus ABSN program at Roseman University is a full-time, immersive learning experience available at our campuses in Southern Nevada and Utah. Clinical rotations, group assignments, and laboratory assignments are also held in-person at one of the Roseman campuses and/or nearby affiliated healthcare facilities.

HYBRID-ONLINE LEARNING MODALITY

For students seeking greater flexibility, Roseman University offers a hybrid-online ABSN program. The didactic (lecture-based) portion is delivered online, while clinical rotations, lab training, and group assignments take place at Roseman's campuses and/or affiliated healthcare facilities in Southern Nevada or Utah. This hybrid format allows students to balance their studies with other commitments while still receiving the hands-on training necessary to excel in nursing.



LIFE AS A ROADRUNNER

CAMPUS HIGHLIGHTS

With campuses in Nevada and Utah, Roseman University is in the nation's burgeoning Intermountain West region which offers an abundance of outdoor recreation, such as hiking, rock climbing, boating, camping, off-roading and world-class skiing and snowboarding in communities with rich cultural opportunities and a variety of entertainment. The scenic beauty, recreational opportunities, easy way of life and professional possibilities in Nevada and Utah give students, faculty and staff an environment where they can reignite their passions and achieve their goals.

HENDERSON, NV

- Professional sports teams – Golden Knights (NHL), Raiders (NFL) Aces (WNBA), Las Vegas Aviators (MiLB) and Las Vegas Lights FC (USL Championship)
- Red Rock Canyon National Conservation Area
- Lake Mead National Recreation Area
- The Smith Center for the Performing Arts
- T-Mobile Arena, Allegiant Stadium & Lee's Family Forum
- Sphere



SOUTH JORDAN, UT

- Professional sports teams – Utah Jazz (NBA), Utah Mammoth (NHL), Real Salt Lake (MLS) & Salt Lake Bees (MiLB)
- “Mighty 5” National Parks – Arches, Bryce Canyon, Canyonlands, Capitol Reef, and Zion
- Hale Centre Theatre
- Utah First Credit Union Amphitheatre
- Delta Center
- South Jordan is consistently named one of the best places to live in America by Money, U.S. News & World Report, Liveability, and Travel & Leisure



THE HEART BEHIND THE SCRUBS: ABS N ALUMNI INSIGHTS



TYLER & MIKAELA, ABSN '24

“The faculty at the South Jordan Campus poured countless hours into making sure we were ready—not just to pass exams, but to excel in our careers.”



YVETTE, ABSN '22

“My father was a nurse in the Philippines before he came to the US and became a cardiothoracic ICU nurse. He inspired me.”



AMANDA, ABSN '22

“I realize now how much the Roseman model set us up for success. While I studied a lot and the program was difficult, the assessments, collaborative culture, and relationships with the faculty were perfect for me.”



BRANDON, ABSN '21

“Roseman gave me the nursing skills needed for me to succeed. I know my grandmother Esperanza is smiling down on me.”



AMANDA, ABSN '22

“Becoming a nurse allows me to think critically and utilize a unique skill set, all while impacting patients’ lives.”



TALISA, ABSN '23

“I knew that everything I was learning could be the difference between saving someone’s life or not. That was all the motivation I needed.”

Read their complete Heart of Roseman stories—along with many more from our incredible alumni, students, faculty, and staff—here:

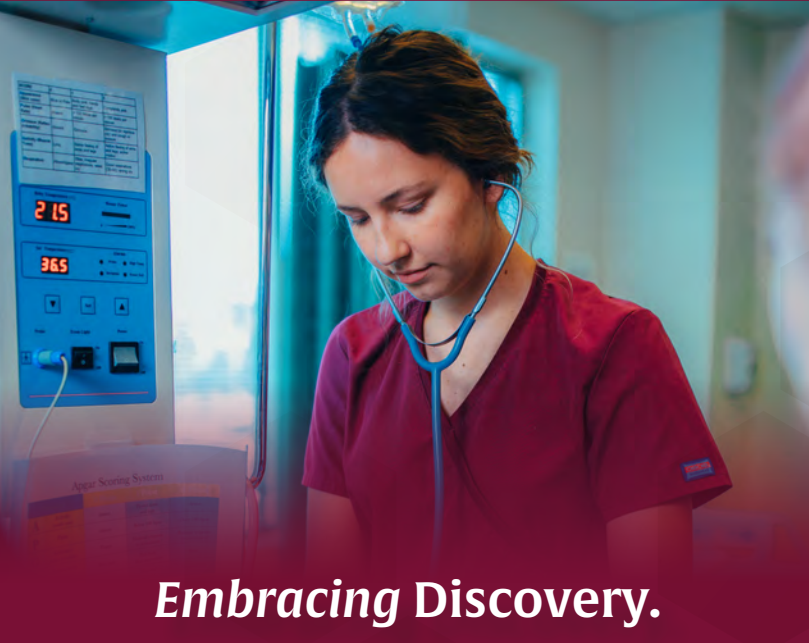
www.roseman.edu/heart-of-roseman



Transforming Education.



Reimagining Healthcare.



Embracing Discovery.



Committed to Community.

ROSEMAN UNIVERSITY
COLLEGE OF NURSING

roseman.edu

 [@rosemannursing](https://www.instagram.com/rosemannursing) | [@rosemanuhs](https://www.instagram.com/rosemanuhs)

